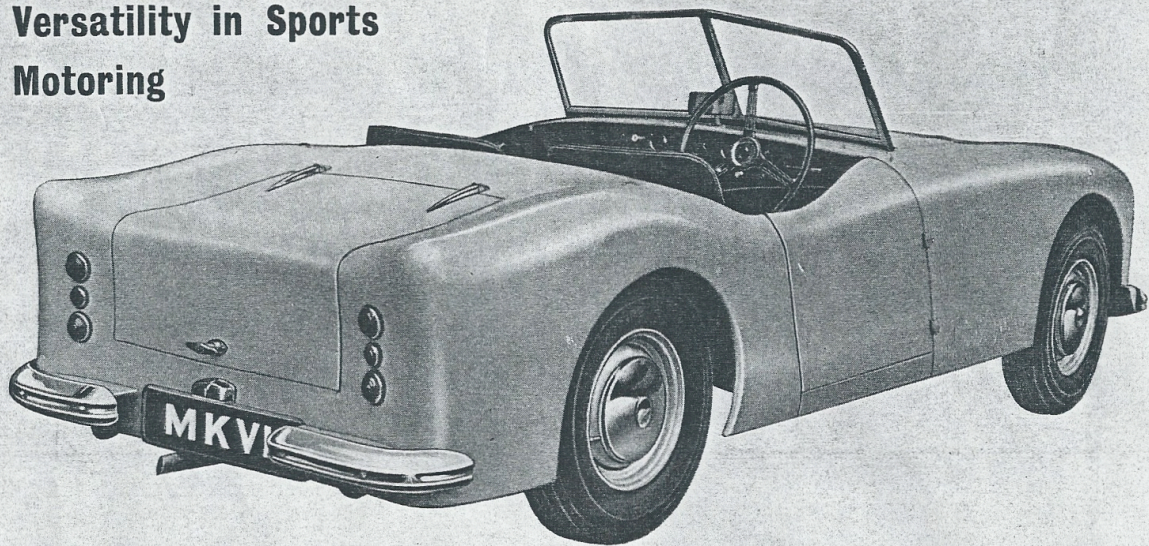


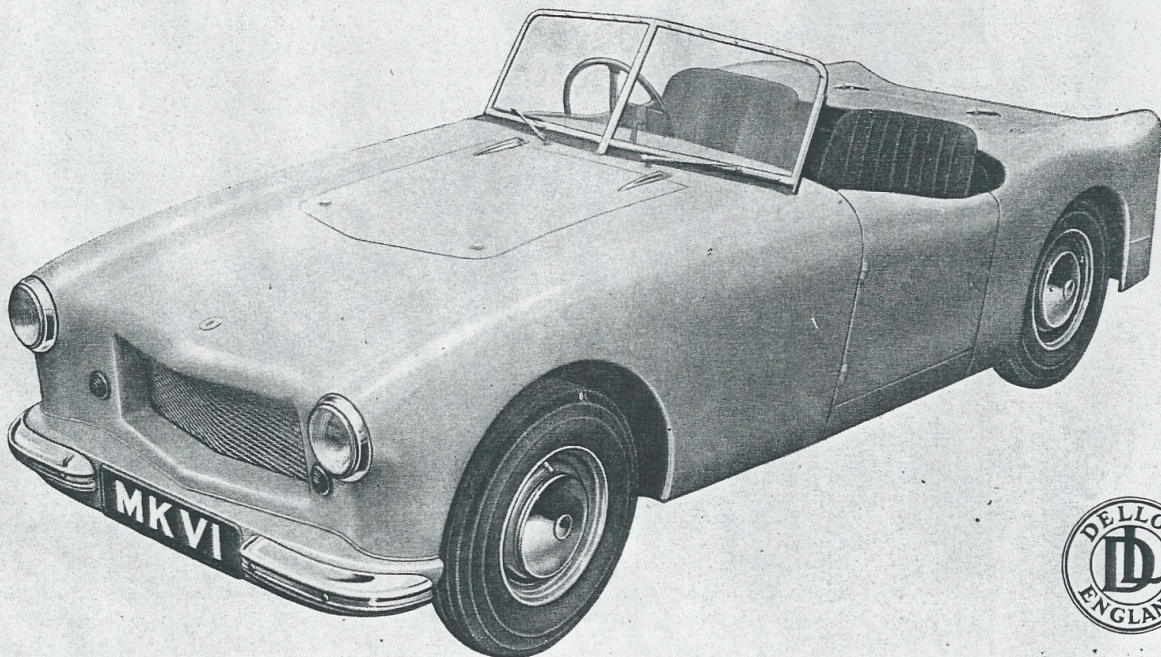
Dellow

**Versatility in Sports
Motoring**



THE VERSATILE

Dellow **SPORTS CAR**



DELLOW ENGINEERING COMPANY LIMITED · OLDBURY · BIRMINGHAM · ENGLAND

Introducing . . .

THE LIGHTWEIGHT MK. VI *DELLOW*

Graceful, Appealing, the Mk. VI. comes to you, embodying all the toughness and potential of its highly successful predecessors in the competition field, typifying the *DELLOW* tradition of versatility in sports motoring.

Low maintenance costs with world-wide spares service on hand.

Truly an exciting production for the competitor, enthusiast and family man.

Specification . . .

ENGINE

Four in line, side valves, 63.5 mm. bore x 92.5 mm. stroke. Capacity 1.172 c.c. (71.55 cu. ins.). Piston area 19.64 sq. ins.
TORQUE lb. ft.—54 at 2,150 r.p.m.
B.H.P.—36 at 4,400 r.p.m.
COMPRESSION RATIO—7.0 : 1.
CARBURATION—Single down draft or twin semi-down draft S.U. as special equipment.
ELECTRICAL SYSTEM—12v. Exide Battery, Flashing Indicators, Coil Ignition, Twin Wipers.
PLUGS—L.10 or L.10.S Champion.
EXHAUST—Alternative high efficiency manifold available as special equipment.
COOLING—Pump induced circulation fan assisted.

TRANSMISSION

CLUTCH—Single dry plate, hydraulically operated.
GEAR RATIOS—Top, 4.429; 2nd, 8.89; 1st, 16.23; Rev., 21.22. Open Drive shaft. Final drive by spiral bevel. Gearbox remote controlled from central position.

CHASSIS

Rigid tubular construction

BRAKES

Hydraulic, 2 L.S. front, 73.2 sq. ins. friction lining area, Independent Lever Hand Brake.

SUSPENSION—Front, Coil, I.F.S. Rear, Half Elliptic.
SHOCK ABSORBERS—Double acting telescopic.
WHEEL EQUIPMENT—Pressed Steel Wheels, bolt-on type, 5.90 x 13. Fitted Michelin Tyres.

DIMENSIONS

Wheelbase, 7ft. 6in. Track, 3ft. 11½in. Length (overall), 11ft. 10in. Width (overall), 4ft. 9in. Height (over screen), 4ft. 0in. Height (over body), 2ft. 0½in. Ground clearance, 7½in. Turning circle, 33ft. Dry weight (in full trim), 11¼cwt. Fuel Tank, 5½ imp. gals.

BODY

Light Alloy Panelling on Tubular Frame. Open, streamlined design with Bumpers front and rear. Ample Luggage Boot in rear. Adjustable Seating. Full all-weather equipment, Folding Hood incorporating large Back Light. Generous Pockets in each door. Tonneau Cover as special equipment.

COLOURS

Ivory, Red, Green or Blue, with Black Trimming and Piping to match. Red Carpeting with Underfelt.

The right is reserved to vary the specification at any time without notice.

EXPORT MODEL

Left or right-hand drive. Engine fitted twin S.U. Carburettors, heavy rate Valve Springs, high compression Head. Tonneau Cover included with All-Weather Equipment.

CONDITIONS OF SALE.—The goods manufactured by Dellow Eng. Co. Ltd. are supplied with an express warranty which excludes all warranties, liabilities and conditions whatsoever implied by Common Law, Statute or otherwise. The Company reserve the right to vary the list price and/or specification at any time. All goods are invoiced at the prices ruling at the date of delivery. Every precaution has been taken to ensure accuracy of details appearing in publications, but the Company accept no liability for errors or omissions.

GUARANTEE.—All Warranties, Conditions or Guarantees as to quality or fitness for the purpose for which goods are sold, or as to any other matter implied by Common Law, Statute or otherwise are in all cases excluded. The Company guarantee to repair or supply free of charge any part or parts which may become faulty, due to defective material or workmanship, within six months from date of purchase provided that

- (a) The Car is still in the possession of the original purchaser;
 - (b) The Owner communicates with the Company immediately the fault becomes apparent;
 - (c) The Owner sends the car or alleged faulty part or parts to the Company, carriage paid, stating the Chassis and Engine No. and date of purchase.
- The Company's guarantee does not include proprietary articles manufactured by other firms, but such warranty as these manufacturers issue is transferred to the customer. The Company's liability is confined to the free replacement of the agreed defective material, it does not include the removal of the faulty parts and the fitting of such new material as the Company may agree to supply.